

30558(W) x 3000(H) Clearseal II + Clearseal IIs laterally sliding shutter in shopping arcade Elements, Kowloon Station



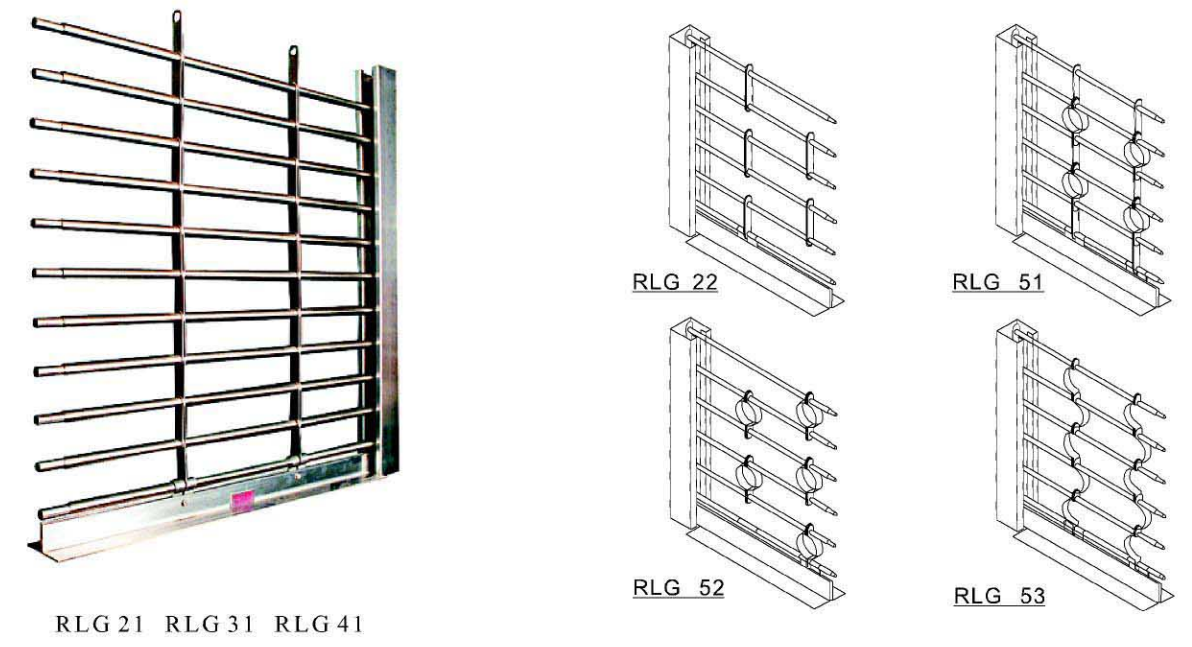
Clearseal II + Clearseal IIs roller shutter in a convenient store

(SEE THROUGH, VENTILATION FOR SECURITY PURPOSE & ENERGY SAVING)

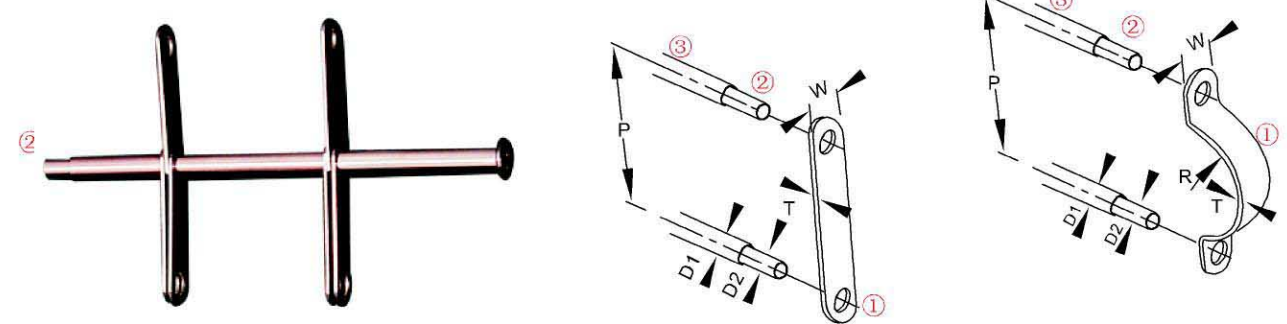
GENERAL DESCRIPTION

The GRILLE curtain shutter/rolling screen shutter is built up from a set of rolling links, horizontal axis (inner tube) and spacer tube (outside tube) to form a continuous rolling curtain. The rolling links linked up by horizontal axis and outside tube of certain length going through the horizontal axis and inserted between each two links to secure the links in certain position. The pitch of the link is 76mm or 85mm, and the distance from each two links is 300mm, 450mm or 600mm for different grille/screen shutter. The horizontal axis is made of stainless steel tube as a standard for maximum strength and ensure corrosion resistance. Links and outside tube can be made of stainless steel SUS 316, SUS304 or aluminium alloy. Different size and shape of link forms different pattern to match the shopfront design.

DIFFERENT TYPES OF CURTAIN PATTERNS (GRILLE SHUTTERS)



Shutter Curtain : is composed of rolling link①, horizontal axis② and outside tube③



SPECIFICATIONS

Pattern Number	W	T	P	L	D1	D2	R
RLG 21	19	3	76	300	13	10	NA
RLG 22	19	3	76	300	13	10	NA
RLG 31	25	3	76	600	20	15	NA
RLG 41	25	3	85	300	20	15	NA
RLG 51	25	3	85	300	20	15	25
RLG 52	25	3	85	300	20	15	25
RLG 53	23	3	85	300	20	15	25